

High Pressure Wingstyle Hydraulic Couplings



Applications

- Oil field (hydraulic supply lines, blow out preventer, pipe spinners, top drives, and coil tubing units)
- Construction (pile drivers, tampers, hydraulic hammers, and submersible pumps)
- Offshore (supply reels, platform jack-up systems, and water pump systems)

Sizes

- 3/4" - 2"

Features

- View ports available on request (except for BOP models)
- Steel componentry plated using ROHS compliant zinc nickel
- Main valve seal is housed to improve seal integrity during pressured connection and disconnection
- NPTF, BSPP, Code 62 flange, and ORB
- Parker Snap-Tite 75 Series, Hydraulics Incorporated 5TV Series, Stucchi VOF, Faster OGV, and DNP VFF-HD

Materials

- Body: steel and 316 stainless steel
- Seal: nitrile, FKM, and EPDM
- Dust caps/plugs: aluminum with steel cable

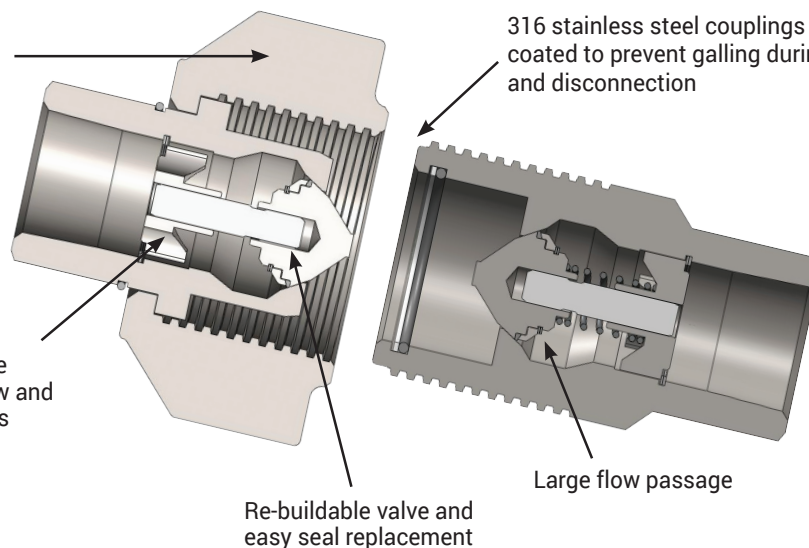
Specifications

- **5000 PSI** working pressure for steel, **3000 PSI** working pressure for 316 stainless



Rugged high-strength steel sand-cast wing nut for threaded connect and disconnect operation

Heavy duty 'spider' valve holder resists surge flow and pressurized connections



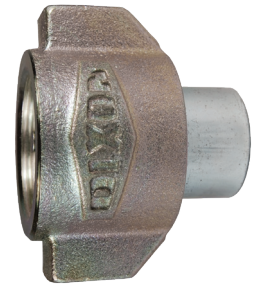
316 stainless steel couplings - threads are coated to prevent galling during connection and disconnection

Large flow passage

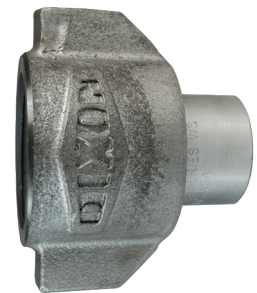
Re-buildable valve and easy seal replacement

Female Threaded Coupler

Body Size	Part Details			Length		Maximum OD		Pkg Qty
	Part #	Threads	Material	Inch	mm	Inch	mm	
3/4"	6WSF4	1/2" - 14 NPTF	steel	2.76	70.1	3.23	82.0	5
	6WSF6	3/4" - 14 NPTF	steel	2.76	70.1	3.23	82.0	5
	6WSF6-SS	3/4" - 14 NPTF	316 stainless	2.76	70.1	3.23	82.0	5
	6WSBF6	3/4" - 14 BSPP	steel	2.76	70.1	3.23	82.0	5
	6WSBF6-SS	3/4" - 14 BSPP	316 stainless	2.76	70.1	3.23	82.0	5
	6WSOF6	1-1/16" - 12 ORB	steel	2.76	70.1	3.23	82.0	5
1"	8WSF8	1" - 11-1/2 NPTF	steel	3.45	87.6	4.00	101.6	5
	8WSF8-SS	1" - 11-1/2 NPTF	316 stainless	3.45	87.6	4.00	101.6	5
	8WSBF8	1" - 11 BSPP	steel	3.45	87.6	4.00	101.6	5
	8WSBF8-SS	1" - 11 BSPP	316 stainless	3.45	87.6	4.00	101.6	5
	8WSOF8	1-5/16" - 12 ORB	steel	3.45	87.6	4.00	101.6	5
1-1/4"	10WSF10	1-1/4" - 1-1/2 NPTF	steel	4.40	111.8	4.65	118.1	1
	10WSF10-SS	1-1/4" - 1-1/2 NPTF	316 stainless	4.40	111.8	4.65	118.1	1
	10WSBF10	1-1/4" - 11 BSPP	steel	4.40	111.8	4.65	118.1	1
	10WSBF10-SS	1-1/4" - 11 BSPP	316 stainless	4.40	111.8	4.65	118.1	1
	10WSOF10	1-5/8" - 12 ORB	steel	4.40	111.8	4.65	118.1	1
1-1/2"	12WSF12	1-1/2" - 11-1/2 NPTF	steel	5.13	130.3	5.43	137.9	1
	12WSF12-SS	1-1/2" - 11-1/2 NPTF	316 stainless	5.13	130.3	5.43	137.9	1
	12WSBF12	1-1/2" - 11 BSPP	steel	5.13	130.3	5.43	137.9	1
	12WSBF12-SS	1-1/2" - 11 BSPP	316 stainless	5.13	130.3	5.43	137.9	1
	12WSOF12	1-7/8" - 12 ORB	steel	5.13	130.3	5.43	137.9	1
2"	16WSF16	2" - 11-1/2 NPTF	steel	6.09	154.7	6.73	170.9	1
	16WSF16-SS	2" - 11-1/2 NPTF	316 stainless	6.09	154.7	6.73	170.9	1
	16WSBF16	2" - 11 BSPP	steel	6.09	154.7	6.73	170.9	1
	16WSBF16-SS	2" - 11 BSPP	316 stainless	6.09	154.7	6.73	170.9	1
	16WSOF16	2-1/2" - 12 ORB	steel	6.09	154.7	6.73	170.9	1



Steel

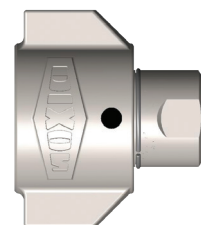


316 Stainless

Optional



WS coupler with wrench flats
Wrench flats may result in reduced pressure performance.



WS coupler with view port

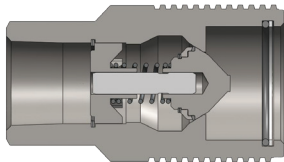
Female Threaded Plugs



Steel



316 stainless



Interior



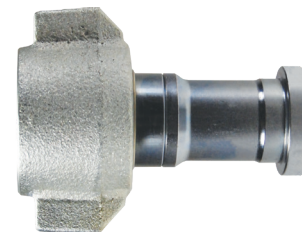
Exterior

Body Size	Part Details			Length		Maximum OD		Pkg Qty
	Part #	Threads	Material	Inch	mm	Inch	mm	
3/4"	WS6F4	1/2" - 14 NPTF	steel	3.27	83.1	1.74	44.2	5
	WS6F6	3/4" - 14 NPTF	steel	3.27	83.1	1.74	44.2	5
	WS6F6-SS	3/4" - 14 NPTF	316 stainless	3.27	83.1	1.74	44.2	5
	WS6BF6	3/4" - 14 BSPP	steel	3.27	83.1	1.74	44.2	5
	WS6BF6-SS	3/4" - 14 BSPP	316 stainless	3.27	83.1	1.74	44.2	5
1"	WS6OF6	1-1/16" - 12 ORB	steel	3.27	83.1	1.74	44.2	5
	WS8F8	1" - 11-1/2 NPTF	steel	4.18	106.2	2.25	57.2	5
	WS8F8-SS	1" - 11-1/2 NPTF	316 stainless	4.18	106.2	2.25	57.2	5
	WS8BF8	1" - 11 BSPP	steel	4.18	106.2	2.25	57.2	5
	WS8BF8-SS	1" - 11 BSPP	316 stainless	4.18	106.2	2.25	57.2	5
1-1/4"	WS8OF8	1-5/16" - 12 ORB	steel	4.18	106.2	2.25	57.2	5
	WS10F10	1-1/4" - 11-1/2 NPTF	steel	5.38	136.7	2.63	66.8	1
	WS10F10-SS	1-1/4" - 11-1/2 NPTF	316 stainless	5.38	136.7	2.63	66.8	1
	WS10BF10	1-1/4" - 11 BSPP	steel	5.38	136.7	2.63	66.8	1
	WS10BF10-SS	1-1/4" - 11 BSPP	316 stainless	5.38	136.7	2.63	66.8	1
1-1/2"	WS10OF10	1-5/8" - 12 ORB	steel	5.38	136.7	2.63	66.8	1
	WS12F12	1-1/2" - 11-1/2 NPTF	steel	5.98	151.9	3.25	82.6	1
	WS12F12-SS	1-1/2" - 11-1/2 NPTF	316 stainless	5.98	151.9	3.25	82.6	1
	WS12BF12	1-1/2" - 11 BSPP	steel	5.98	151.9	3.25	82.6	1
	WS12BF12-SS	1-1/2" - 11 BSPP	316 stainless	5.98	151.9	3.25	82.6	1
2"	WS12OF12	1-7/8" - 12 ORB	steel	5.98	151.9	3.25	82.6	1
	WS16F16	2" - 11-1/2 NPTF	steel	7.05	179.1	4.00	101.6	1
	WS16F16-SS	2" - 11-1/2 NPTF	316 stainless	7.05	179.1	4.00	101.6	1
	WS16BF16	2" - 11 BSPP	steel	7.05	179.1	4.00	101.6	1
	WS16BF16-SS	2" - 11 BSPP	316 stainless	7.05	179.1	4.00	101.6	1
	WS16OF16	2-1/2" - 12 ORB	steel	7.05	179.1	4.00	101.6	1

Code 62

Flange Head Couplers

Body Size	Port Size	Steel Part #
3/4"	3/4"	6WSFH6
1"	1"	8WSFH8
1-1/4"	1-1/4"	10WSFH10
1-1/2"	1-1/2"	12WSFH12
2"w	2"	16WSFH16



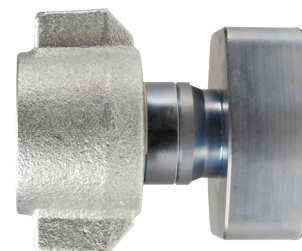
Flange Head Plugs

Body Size	Port Size	Steel Part #
3/4"	3/4"	WS6FH6
1"	1"	WS8FH8
1-1/4"	1-1/4"	WS10FH10
1-1/2"	1-1/2"	WS12FH12
2"	2"	WS16FH16



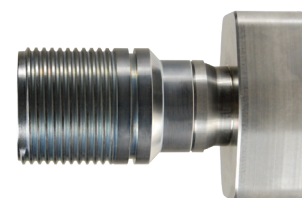
Flange Pad Couplers

Body Size	Port Size	Steel Part #
3/4"	3/4"	6WSFP6
1"	1"	8WSFP8
1-1/4"	1-1/4"	10WSFP10
1-1/2"	1-1/2"	12WSFP12
2"	2"	16WSFP16



Flange Pad Plugs

Body Size	Port Size	Steel Part #
3/4"	3/4"	WS6FP6
1"	1"	WS8FP8
1-1/4"	1-1/4"	WS10FP10
1-1/2"	1-1/2"	WS12FP12
2"	2"	WS16FP16



Accessories

Rigid Dust Caps



Body Size	Aluminum Body With Steel Cable Part #
3/4"	WS6DC-A
1"	WS8DC-A
1-1/4"	WS10DC-A
1-1/2"	WS12DC-A
2"	WS16DC-A

Rigid Dust Plugs



Body Size	Aluminum Body With Steel Cable Part #
3/4"	6WSDP-A
1"	8WSDP-A
1-1/4"	10WSDP-A
1-1/2"	12WSDP-A
2"	16WSDP-A

Seal Kits



Body Size	Coupler Style	Seal Kit Contents	Nitrile Part #
3/4"	all	body / valve seals and retaining rings	6WS-SKIT
1"	all	body / valve seals and retaining rings	8WS-SKIT
1-1/4"	all	body / valve seals and retaining rings	10WS-SKIT
1-1/2"	all	body / valve seals and retaining rings	12WS-SKIT
2"	all	body / valve seals and retaining rings	16WS-SKIT

Repair Kits



Body Size	Coupler Style	Repair Kit Contents	Nitrile Part #
3/4"	all	valve assembly, O-ring, and PTFE B.U.	6WS-RKIT
1"	all	valve assembly, O-ring, and PTFE B.U.	8WS-RKIT
1-1/4"	all	valve assembly, O-ring, and PTFE B.U.	10WS-RKIT
1-1/2"	all	valve assembly, O-ring, and PTFE B.U.	12WS-RKIT
2"	all	valve assembly, O-ring, and PTFE B.U.	16WS-RKIT

WS-BOP Series Hydraulic Couplings

Application

- Designed for use in oil field BOP accumulator systems where couplings are required to operate under fire conditions

Features

- Red powder coated components and external O-rings for easy BOP service identification
- Steel components are plated using ROHS compliant zinc nickel
- Individually marked with the BOP series designation, API 16D specification and date code

Specification

- Pressure rating **5000 PSI**

Approvals

- Fire tested and Lloyd's certified to **1300°F (700°C)** in accordance with API 16D
- Certificate available upon request

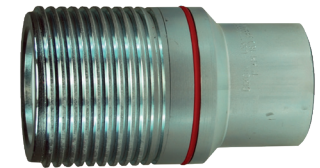
Female Threaded Couplers

Body Size	Threads	Steel Part #	316 Stainless Steel Part #
3/4"	1/2" - 14 NPTF	6WSF4-BOP	---
	3/4" - 14 NPTF	6WSF6-BOP	6WSF6-SS-BOP
1"	1" - 11-1/2 NPTF	8WSF8-BOP	8WSF8-SS-BOP
1-1/4"	1-1/4" - 11-1/2 NPTF	10WSF10-BOP	10WSF10-SS-BOP
1-1/2"	1-1/2" - 11-1/2 NPTF	12WSF12-BOP	12WSF12-SS-BOP
2"	2" - 11-1/2 NPTF	16WSF16-BOP	16WSF16-SS-BOP



Female Threaded Plugs

Body Size	Threads	Steel Part #	316 Stainless Steel Part #
3/4"	1/2" - 14 NPTF	WS6F4-BOP	---
	3/4" - 14 NPTF	WS6F6-BOP	WS6F6-SS-BOP
1"	1" - 11-1/2 NPTF	WS8F8-BOP	WS8F8-SS-BOP
1-1/4"	1-1/4" - 11-1/2 NPTF	WS10F10-BOP	WS10F10-SS-BOP
1-1/2"	1-1/2" - 11-1/2 NPTF	WS12F12-BOP	WS12F12-SS-BOP
2"	2" - 11-1/2 NPTF	WS16F16-BOP	WS16F16-SS-BOP



Seal Kits

Body Size	Coupler Style	Repair Kit Contents	FR FKM Part #
3/4"	all	body / valve seals and retaining rings	6BOP-SKIT
1"	all	body / valve seals and retaining rings	8BOP-SKIT
1-1/4"	all	body / valve seals and retaining rings	10BOP-SKIT
1-1/2"	all	body / valve seals and retaining rings	12BOP-SKIT
2"	all	body / valve seals and retaining rings	16BOP-SKIT



Notes

Limited Warranty

DIXON VALVE AND COUPLING COMPANY, LLC (herein called "Dixon") warrants the products described herein and manufactured by Dixon to be free from defects in material and workmanship for a period of one (1) year from date of shipment by Dixon under normal use and service. Its sole obligation under this warranty being limited to repairing or replacing, as hereinafter provided, at its option any product found to Dixon's satisfaction to be defective upon examination by it, provided that such product shall be returned for inspection to Dixon's factory within three (3) months after discovery of the defect. The repair or replacement of defective products will be made without charge for parts or labor. This warranty shall not apply to: (a) parts or products not manufactured by Dixon, the warranty of such items being limited to the actual warranty extended to Dixon by its supplier; (b) any product that has been subject to abuse, negligence, accident, or misapplication; (c) any product altered or repaired by others than Dixon; and (d) to normal maintenance services and the replacement of service items (such as washers, gaskets, and lubricants) made in connection with such services. To the extent permitted by law, this limited warranty shall extend only to the buyer and any other person reasonably expected to use or consume the goods who is injured in person by any breach of the warranty. No action may be brought against Dixon for an alleged breach of warranty unless such action is instituted within one (1) year from the date the cause of action accrues. This limited warranty shall be construed and enforced to the fullest extent allowable by applicable law.

Other than the obligation of Dixon set forth herein, Dixon disclaims all warranties, express or implied, including but not limited to any implied warranties of merchantability or fitness for a particular purpose, and any other obligation or liability. The foregoing constitutes Dixon's sole obligation with respect to damages, whether direct, incidental, or consequential, resulting from the use or performance of the product.

Some products and sizes may be discontinued when stock is depleted or may require a minimum quantity for ordering.

Limits of Liability

This catalog is intended as a product offering. It is not intended to be a user or technical manual. Information in this catalog is subject to change without notice. All users and distributors of products sold through this catalog should contact Dixon with questions of use, compatibilities, coupling procedures, and life of product. Our full-time engineering and test staff are always available to recommend uses and to assist distributors and users with any questions.



Safety



Safety logos, which appear throughout our catalog, are used as a reminder that the user should carefully review for the appropriateness of the product for the media, application, and environment in which it will be used.

NOTE: Because of the health hazards associated with contamination and lead content in drinking water systems, Dixon couplings, unless otherwise specifically approved, are not recommended for potable water service and should not be used in applications where drinking water will contact the wetted surfaces of the coupling.



WARNING: Dixon products may contain chemicals known to the State of California to cause cancer, birth defects, or other reproductive harm.

Trademark

Kamvalok[®] is a registered trademark of OPW Engineered Systems.

Copyright

Copyright © 2021 by Dixon Valve and Coupling Company, LLC

All rights reserved. This book is copyrighted material. Use, reproduction or copying of it by anyone other than Dixon[®] is strictly forbidden without its express written consent.

NOTE: Reasonable care has been taken in preparing this catalog. Dixon Valve & Coupling Company, LLC reserves the right to make corrections.

