

Internally Expanded Permanent Couplings - Scovill Style


Applications

- Recommended for discharge and suction service; commonly used in the transfer of fuel to homes, airplanes, ships, etc.
- Intended for fuel delivery service, see page 5 for information on API/EI 1529 certification

Material

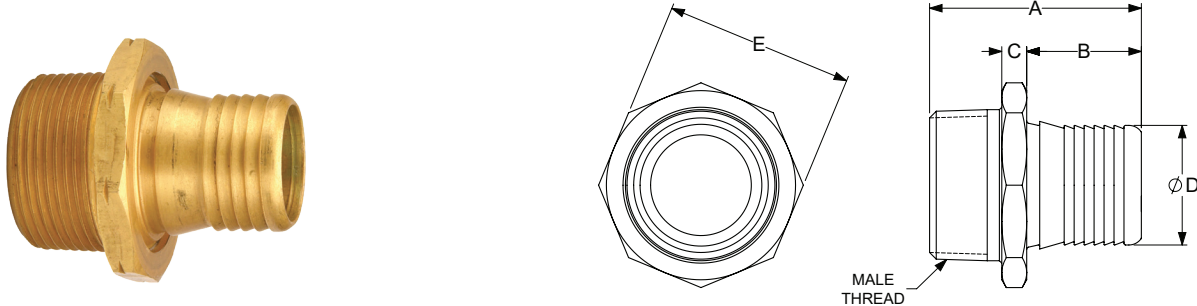
- Male and female stems are machined from bar stock or solid brass forgings; ferrules are available in brass and stainless steel

Features

- Compact, lightweight, and streamlined to eliminate catching on curbs and shrubs
- Stems and ferrules are designed to be used together as a coupling system
- Stem is expanded to nominal I.D. of hose for a rigid, uniform, full-flow area
- All fittings have octagonal facets for tightening with a wrench; females in 1-1/2" and larger sizes have lugs for tightening
- Pre-lubricated for assembly
- Designed for internal expansion only
- Hand and electrically operated installation equipment is available; consult Dixon® for pricing and availability
- Working pressure varies with the size of the fitting, the size and construction of the hose, and the media being conveyed; consult Dixon for recommendations
- Do not interchange with other manufacturers 

520-H Series

Male Threaded End x Hose Shank



Size	Thread Type	Part #	A Overall Length	B Shank Length	C Width	D Shank Diameter	E Across Flats
3/4"	NPT	H5192	1-31/32"	1"	1/4"	3/4"	1-1/2"
1"		H5212-A	2-1/4"	1-1/8"	1/4"	1"	1-13/16"
1-1/4"		H5222-A	2-27/64"	1-1/4"	9/32"	1-1/4"	2-1/8"
1-3/8"		H5272 ¹	2-23/32"	1-7/16"	9/32"	1-3/8"	2-3/8"
1-1/2"		H5232-A	2-21/32"	1-7/16"	5/16"	1-1/2"	2-3/8"
2"		H5242	3-1/8"	1-3/4"	3/8"	2"	3"
2-1/2"		H5252	3-7/8"	2"	1/2"	2-1/2"	3-1/2"
3"	H5262	4-1/2"	2-3/8"	5/8"	3"	4-1/16"	
1"	NST	H5212NST	2"	1-1/8"	1/4"	1"	1-13/16"
1-1/2"		H5232NST	2-3/8"	1-7/16"	5/16"	1-1/2"	2-3/8"

Long Style ²

Size	Thread Type	Part #	A Overall Length	B Shank Length	C Width	D Shank Diameter	E Across Flats
2"	NPT	H5242L-A	3-11/16"	2-5/16"	3/8"	2"	3"
2-1/2"		H5252L-A	4-15/16"	3-1/16"	1/2"	2-1/2"	3-1/2"
3"		H5262L-A	5-3/4"	3-5/8"	5/8"	3"	4-1/16"
4"		H5282L-A	6-1/32"	3-29/32"	9/16"	4"	5-1/2"

¹ 1-3/8" coupling has 1-1/2" thread.

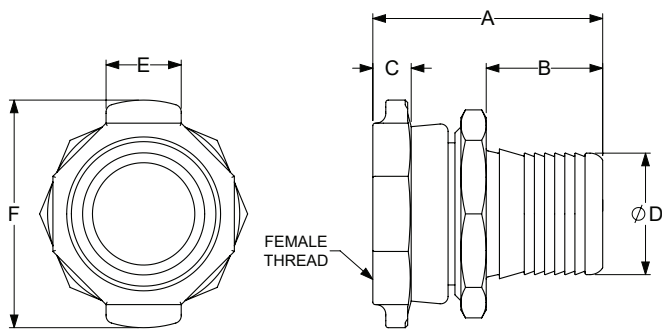
² Long shank stems to be used with long shank stainless ferrules on page 6.



Do not interchange with other manufacturer's fittings.

520-H Series

Female Threaded Nut x Hose Shank



- Replacement washers listed on page 7.

Size	Thread Type	Part #	A Overall Length	B Shank Length	C Width	D Shank Diameter	E Lug Width	F ³ Across Flats
3/4"	NPSH	H5191-BU	2-3/16"	1"	13/32"	3/4"	---	1-5/16"
1"		H5211-A-BU	2-3/8"	1-1/8"	3/8"	1"	---	1-5/8"
1-1/4"		H5221-A-BU	2-9/16"	1-1/4"	13/32"	1-1/4"	---	1-15/16"
1-3/8"		H5271-BU ¹	2-13/16"	1-7/16"	15/32"	1-3/8"	15/16"	2-13/16"
1-1/2"		H5231-A-BU	2-27/32"	1-7/16"	15/32"	1-1/2"	15/16"	2-13/16"
2"		H5241-BU	3-17/32"	1-3/4"	5/8"	2"	1-5/32"	3-9/16"
3"	NPSM	H5261	4-21/32"	2-3/8"	21/32"	3"	1-19/32"	5-3/16"
1"	NST	H5211NST	2-3/8"	1-1/8"	15/32"	1"	---	1-5/8"
1-1/2"		H5231NST ²	2-29/32"	1-7/16"	15/32"	1-1/2"	15/16"	2-13/16"

Long Style⁴

Size	Thread Type	Part #	A Overall Length	B Shank Length	C Width	D Shank Diameter	E Lug Width	F Across Flats
2"	NPSH	H5241L-A-BU	4-3/32"	2-5/16"	5/8"	2"	1-5/32"	3-9/16"
2-1/2"	NPSM	H5251L-A-BU	5-7/32"	3-1/16"	5/8"	2-1/2"	1-3/8"	4-7/16"
3"		H5261L-A-BU	5-29/32"	3-5/8"	21/32"	3"	1-19/32"	5-3/16"
4"		H5281L-A-BU	6-1/16"	3-29/32"	3/4"	4"	2-1/16"	6-1/4"

¹ 1-3/8" coupling has 1-1/2" thread.

² 1-1/2" NST requires special adapter, part # H5231NSTADT

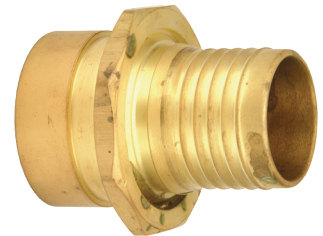
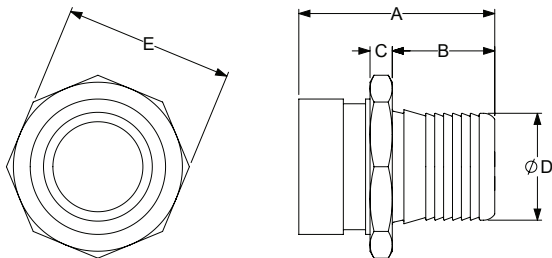
³ 3/4" - 1-1/4" are not available with lugs. The dimension given is the distance across the flats of the nut.

⁴ Long shank stems to be used with long shank stainless ferrules on page 6.

Do not interchange with other manufacturer's fittings. 

520-G Series

Grooved End x Hose Shank



Size	Part #	A Overall Length	B Shank Length	C Width	D Shank Diameter	F Across Flats
1"	G5212	2-5/16"	1-1/8"	1/4"	1"	1-3/16"
1-1/2"	G5232	2-3/4"	1-7/16"	5/16"	1-1/2"	2-3/8"
2"	G5242	3-1/8"	1-3/4"	3/8"	2"	3"
2-1/2"	G5252	3-9/16"	2"	1/2"	2-1/2"	3-1/2"

Holedall® Petroleum Style Series Ferrules

Application

- For use with Holedall Petroleum style couplings on pages 2 and 3

Feature

- Eliminates the need for a large stock of coupling bodies
- With a wide range of sizes available, you can build the perfect assembly of a coupling to a corresponding hose size with commercial tolerances, regardless of wall thickness



Hose I.D.	Hose O.D.		Brass Part #
	From	To	
3/4"	1-4/64"	1-7/64"	R75AAAS
	1-8/64"	1-11/64"	R75AAS
	1-12/64"	1-14/64"	R75AS
	1-15/64"	1-17/64"	R75BS
	1-18/64"	1-20/64"	R75CS
1"	1-24/64"	1-26/64"	R1AAAS-A
	1-27/64"	1-29/64"	R1AAS-A
	1-30/64"	1-32/64"	R1AS-A
	1-33/64"	1-35/64"	R1BS-A
	1-36/64"	1-38/64"	R1CS-A
	1-39/64"	1-41/64"	R1DS-A
	1-42/64"	1-44/64"	R1ES-A
	1-39/64"	1-42/64"	R125AAS-A
1-1/4"	1-43/64"	1-46/64"	R125AS-A
	1-47/64"	1-50/64"	R125BS-A
	1-51/64"	1-54/64"	R125CS-A
	1-55/64"	1-58/64"	R125DS-A
	1-59/64"	1-62/64"	R125ES-A
1-3/8"	1-47/64"	1-50/64"	R1375BS
	1-51/64"	1-54/64"	R1375CS
	1-55/64"	1-58/64"	R1375DS
	1-59/64"	1-62/64"	R1375ES
1-1/2"	1-54/64"	1-57/64"	R15AAAS-A
	1-58/64"	1-62/64"	R15AAS-A
	1-63/64"	2-2/64"	R15AS-A
	2-3/64"	2-6/64"	R15BS-A
	2-7/64"	2-11/64"	R15CS-A
	2-12/64"	2-14/64"	R15DS-A
	2-15/64"	2-19/64"	R15ES-A
	2-20/64"	2-24/64"	R15FS-A
2"	2-27/64"	2-30/64"	R2AAS
	2-31/64"	2-34/64"	R2AS
	2-35/64"	2-38/64"	R2BS
	2-39/64"	2-42/64"	R2CS
	2-43/64"	2-46/64"	R2DS
	2-47/64"	2-50/64"	R2ES
	2-51/64"	2-54/64"	R2FS
2-1/2"	2-62/64"	3-1/64"	R25AS
	3-2/64"	3-6/64"	R25BS
	3-7/64"	3-11/64"	R25CS
	3-12/64"	3-16/64"	R25DS
3"	3-30/64"	3-34/64"	R3AAAS
	3-35/64"	3-39/64"	R3AAS
	3-40/64"	3-45/64"	R3AS
	3-46/64"	3-50/64"	R3BS
	3-51/64"	3-54/64"	R3CS

API Certified Attached Holedall® Petroleum Male Couplings

Specifications

- Working pressure: **300 PSI**
- Uses ferrules on page 6

Feature

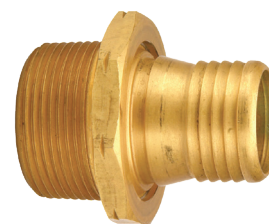
- Internal expansion

Approval

- Tested and compliant with API/EI 1529 6th edition; coupling procedures, ferrule recommendations, and API test data are available upon request, please contact Dixon® at engineering@dixonvalve.com

Male Couplings

Size	Thread Type	Brass Part #
1"	NPT	H5212-A
1-1/4"		H5222-A
1-1/2"		H5232-A
2"		H5242L-A
2-1/2"		H5252L-A
3"		H5262L-A
4"		H5282L-A



Female Couplings

Size	Thread Type	Brass Part #
1"	NPSH	H5211-A-BU
1-1/4"		H5221-A-BU
1-1/2"		H5231-A-BU
2"		H5241L-A-BU
2-1/2"	NPSM	H5251L-A-BU
3"		H5261L-A-BU
4"		H5281L-A-BU



Crimp Fuel Oil Couplings

Application

- Crimpable brass ferrule and stem to outfit fuel oil hose assemblies

Specifications

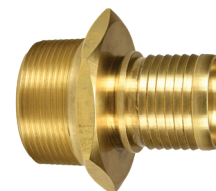
- Working pressure: **250 PSI**
- Uses ferrules on page 6

Features

- Same ferrules are used for crimping as internal expansion
- Faster assembly time
- Does not require tooling used for internal expansion

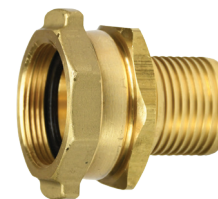
Male Couplings

Size	Thread Type	Brass Part #
1"	NPT	H5212CS
1-1/4"		H5222CS
1-3/8"		H5272CS ¹
1-1/2"		H5232CS



Female Couplings

Size	Thread Type	Brass Part #
1"	NPSH	H5211CS
1-1/4"		H5221CS
1-3/8"		H5271CS ¹
1-1/2"		H5231CS



¹ 1-3/8" stems uses standard ferrules on page 4.

API Certified Series Ferrules

- For use with API and Crimp fuel oil couplings on page 5

Hose I.D.	Hose O.D.		Brass Part #	304 Stainless Steel Part #
	From	To		
1"	1-24/64"	1-26/64"	R1AAAS-A	---
	1-27/64"	1-29/64"	R1AAS-A	---
	1-30/64"	1-32/64"	R1AS-A	---
	1-33/64"	1-35/64"	R1BS-A	---
	1-36/64"	1-38/64"	R1CS-A	---
	1-39/64"	1-41/64"	R1DS-A	---
	1-42/64"	1-44/64"	R1ES-A	---
1-1/4"	1-39/64"	1-42/64"	R125AAS-A	---
	1-43/64"	1-46/64"	R125AS-A	---
	1-47/64"	1-50/64"	R125BS-A	---
	1-51/64"	1-54/64"	R125CS-A	---
	1-55/64"	1-58/64"	R125DS-A	---
	1-59/64"	1-62/64"	R125ES-A	---
1-1/2"	1-54/64"	1-57/64"	R15AAAS-A	---
	1-58/64"	1-62/64"	R15AAS-A	---
	1-63/64"	2-2/64"	R15AS-A	---
	2-3/64"	2-6/64"	R15BS-A	---
	2-7/64"	2-11/64"	R15CS-A	---
	2-12/64"	2-14/64"	R15DS-A	---
	2-15/64"	2-19/64"	R15ES-A	---
	2-20/64"	2-24/64"	R15FS-A	---
2"	2-31/64"	2-34/64"	---	R2ASS-A
	2-35/64"	2-38/64"	---	R2BSS-A
	2-39/64"	2-42/64"	---	R2CSS-A
	2-43/64"	2-46/64"	---	R2DSS-A
	2-47/64"	2-50/64"	---	R2ESS-A
2-1/2"	2-62/64"	3-1/64"	---	R25ASS-A
	3-2/64"	3-6/64"	---	R25BSS-A
	3-7/64"	3-11/64"	---	R25CSS-A
	3-12/64"	3-16/64"	---	R25DSS-A
3"	3-17/64"	3-21/64"	---	R25ESS-A
	3-35/64"	3-39/64"	---	R3AASS-A
	3-40/64"	3-45/64"	---	R3ASS-A
	3-46/64"	3-50/64"	---	R3BSS-A
	3-51/64"	3-54/64"	---	R3CSS-A
4"	3-55/64"	3-59/64"	---	R3DSS-A
	4-46/64"	4-48/64"	---	R4ESS-A
	4-49/64"	4-51/64"	---	R4FSS-A
	4-52/64"	4-54/64"	---	R4GSS-A
	4-55/64"	4-57/64"	---	R4HSS-A
	4-58/64"	4-59/64"	---	R4KSS-A
	4-60/64"	4-62/64"	---	R4LSS-A
	4-63/64"	5"	---	R4MSS-A



brass



304 stainless steel

Female Replacement Washers

Application

- For use with female Holedall® couplings on pages 3 and 5

Size	Nitrile Rubber Part #
3/4"	H5071-BU
1"	H5072-BU
1-1/4"	H5073-BU
1-1/2"	H5074-BU
2"	H5075-BU
2-1/2"	H5076-BU
3"	H5077-BU
4"	H5078-BU




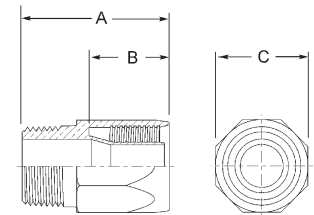
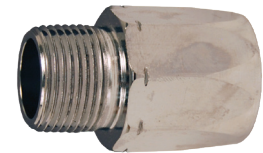
Pump Hose Couplings

Application

- Economical and trouble-free couplings for gas pump hose

Features

- Serrations on the stem embed in the hose, eliminating wicking and leakage
- Shell extends beyond the stem preventing cutting of interior walls; tapered ends of stem and shell protect hose when flexed
- Provide tamper-proof static connection, which cannot be broken without completely damaging coupling and hose
- Internal expansion of stem to nominal I.D. of hose provides full flow
- Broad, firm grip of coupling extends hose life by making it possible for hose to withstand repeated bending
- Hand and electrically operated installation equipment is available; consult Dixon® for pricing and availability
- Reattach static wire if required 



Approval

- UL recognized


Dimensions

Hose I.D.	Male NPT	Hose O.D.	Chrome Plated Brass Part #	A Overall Length	B Shank Length	C Across Flats
3/4"	3/4"	1-9/64"	H5751	2-5/64"	1-9/32"	1-5/16"
		1-11/64"	H5752	2-5/64"	1-9/32"	1-5/16"
		1-13/64"	H5753	2-5/64"	1-9/32"	1-5/16"
		1-7/32"	H5754	2-5/64"	1-9/32"	1-3/8"
		1-17/64"	H5755 ¹	2-5/64"	1-9/32"	1-19/32"
		1-25/64"	H5771	2-21/64"	1-15/32"	1-19/32"
1"	1"	1-29/64"	H5772	2-21/64"	1-7/16"	1-19/32"
		1-1/2"	H5773	2-21/64"	1-7/16"	1-23/32"
		1-9/16"	H5774	2-21/64"	1-7/16"	1-23/32"

¹ Thrust plate required, part # 25000HTL15

Dubl-Grip Field Attachable Couplings for Curb Pump Hose

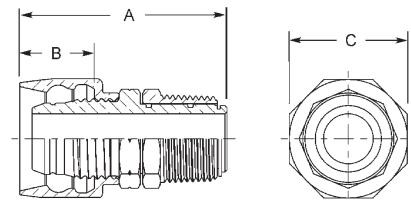
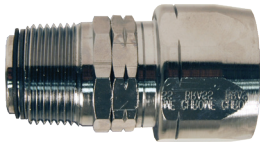
Features

- Two-piece construction
- Streamlined design prevents damage to hose and fits well on new pump equipment
- Wide, flat surfaces of body threads protect inside of hose from breaking
- Tapered surface of sleeve and body cradle hose preventing one-point strain from flexing
- Hose is gripped on its full circumference in two places, ensuring a rigid leakproof connection
- Easy assembly:
 - Hose is held in position by sleeve as body is threaded home
 - Only a wrench is required to assemble the Dubl-Grip
- Reattach static wire if required 

Approval

- UL recognized

Swivel

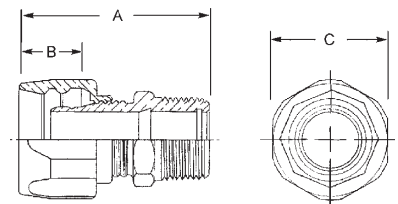


Dimensions

Hose I.D.	Male NPT	Hose O.D.	Chrome-Plated Brass Part #
3/4"	3/4"	1-1/8"	H603
		1-13/64"	H604
		1-1/4"	H605
1"	1"	1-3/8"	H609 ¹
		1-7/16"	H610 ¹
		1-1/2"	H611 ¹

A Overall Length	B Shank Length	C Across Flats
2-13/16"	1-1/8"	1-11/32"
2-13/16"	1-5/32"	1-13/32"
2-13/16"	1-1/8"	1-15/32"
3-1/8"	1-1/8"	1-5/8"
3-1/8"	1-1/8"	1-23/32"
3-1/8"	1-1/8"	1-23/32"

Non-Swivel



Dimensions

Hose I.D.	Male NPT	Hose O.D.	Chrome-Plated Brass Part #
3/4"	3/4"	1-1/8"	850451
		1-13/64"	850455
		1-1/4"	850453
1"	1"	1-3/8"	850841 ¹
		1-7/16"	850801 ¹
		1-1/2"	850811 ¹

A Overall Length	B Shank Length	C Across Flats
2-5/8"	1-1/8"	1-11/32"
2-5/8"	1-5/32"	1-13/32"
2-5/8"	1-1/8"	1-15/32"
2-11/16"	1-1/8"	1-5/8"
2-11/16"	1-1/8"	1-23/32"
2-11/16"	1-1/8"	1-23/32"

¹ Octagonal shape

HB Coupling Expander Machine

Applications

- For use in a fixed location for small production runs or as a portable repair type expander

Features

- Hand-operated, pull-through type expander
- Attaches sizes 3/4" through 2" of the Holedall® Petroleum style and all sizes of the curb pump fittings
- Expander tooling sold separately



Part

2500HB0000

General Safety



- Use Dixon® couplings, retention devices and accessory products only for their intended service.
- All recommendations of the Hose Manufacturer, and the Coupling Manufacturer, must be employed with regards to Size, Temperature, Application, Media, Pressure, Ends, and Dixon (STAMPED) when selecting the components for a hose assembly.
- All finished hose assemblies should be tested in accordance with the Rubber Manufacturers Association (RMA) recommendations.
- All hose assemblies should be thoroughly inspected prior to each use to insure they are undamaged, and properly coupled.
- Use safety clips on couplings, and King Safety Cables on assemblies where required by the manufacturer, as well as State and Federal regulations.
- Call Dixon for advice on couplings, retention devices, and accessories for your application.

