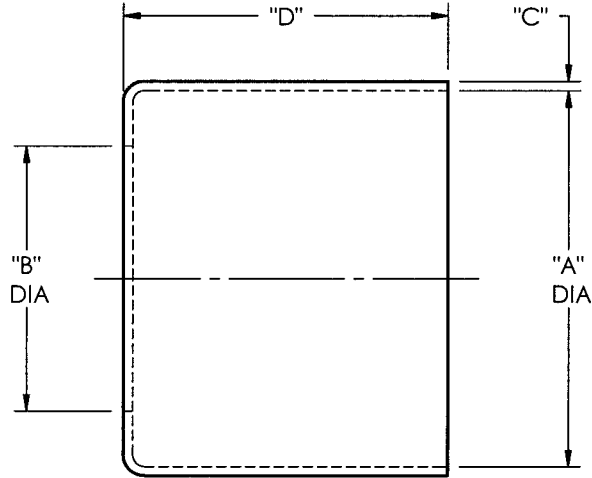


BFXXX

CUSTOMER DWG



PART NO.	"A"	"B"	"C"	"D"
BF800	0.800	0.688	0.024	0.844
BF825	0.825	0.688	0.024	0.844
BF850	0.850	0.688	0.019	0.568
BFW875	0.875	0.688	0.024	0.844
BFW900	0.900	0.688	0.024	0.844
BFW975	0.975	0.688	0.024	0.844
BFW1025	1.025	0.693	0.024	0.844
BFW1175	1.175	0.875	0.024	0.844
BFMW1050	1.050	0.750	0.025	0.625
BFMW1100	1.100	0.812	0.023	0.843
BFMW1150	1.150	0.880	0.024	0.844
BFMW1225	1.225	0.875	0.025	0.875
BFMW1275	1.275	1.000	0.025	0.875
BFMW1400	1.400	1.120	0.020	0.687
BFMW1500	1.500	1.120	0.025	0.875

CUSTOMER DWG

DIXON VALVE & COUPLING CO.
U. S. A.

TITLE

BRASS FERRULES FOR FLUID

DRWN BY:

MHM
1-19-04

CHECKED BY:

APPROVAL:

NE
1-19-04

MAT'L:

BRASS

BFXXX

AGREEMENT TO MAINTAIN CONFIDENTIALITY

This drawing is owned by Dixon Valve & Coupling Co. and shall be returned upon demand. It is loaned on condition that it shall not be copied or reproduced or submitted to others without the owners consent. In accepting it subject to this condition the recipient further agrees that this drawing or any design detail or concept disclosed herein shall not be used in any way detrimental to or in competition with the owner. If the recipient does not agree to the terms of this agreement they shall return this drawing immediately.



The Right Connection™